

and proceeding. Florida road and bridge costs will total \$19,700,000. Average cost \$44,750 per mile. Florida's new work will reduce the mileage to about 440 miles.

16.—ALABAMA: Alabama will complete in December the 10-mile Mobile Bay bridge, the longest highway bridge in the world. It will cost \$2,500,000. Paving and other bridges in Mobile County are costing \$1,000,000 and should be completed this winter. Average cost \$90,000 per mile. About 33 miles east of Mobile Bay not financed.

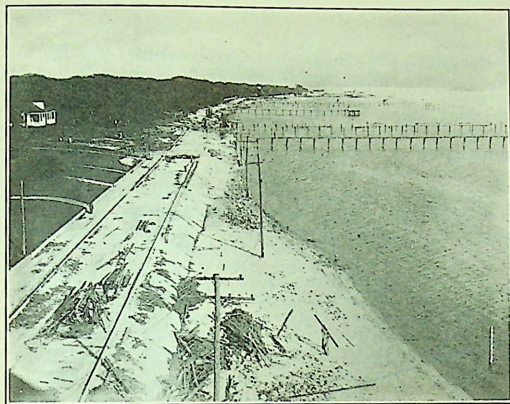
17.—MISSISSIPPI: Across Mississippi, 96 miles. It is costing over \$6,000,000 for the paved roads, bridges and the protecting sea wall. Three bridges are involved totaling 7 miles and a sea wall along the Gulf for 29 miles. All now half completed. Average cost \$62,500 per mile.

18.—LOUISIANA: Louisiana has 350 miles all graveled and well maintained but Lake Pontchartrain and the Mississippi River at New Orleans and Berwick Bay at Morgan City are not bridged. These are difficult projects and so also are some of her road sections but many other OST localities have now conquered difficulties relatively as serious. Paving has not started but Louisiana has so far kept pace with these other states. Average cost to date \$16,500 per mile including Sabine bridge approach.

19.—LOUISIANA and TEXAS are now bridging the Sabine River and marsh, 3.4 miles wide, costing \$700,000. This has been one of the difficult OST waterways. The financing problems like so many of the OST conditions have cost many years of efforts.

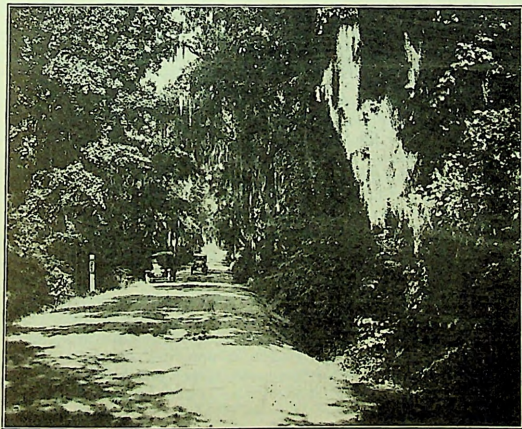
20.—EAST TEXAS: From the Louisiana line to Richmond, Texas, 140 miles, five rivers are crossed that suddenly rise in great floods and at times are miles wide. The bridges, and the approaches over the bottoms, have been costly; the engineering and the construction have been difficult and tedious. Sabine River bridge is under contract. Neches River bridge is completed. Trinity River bridge (old) remains. San Jacinto River is financed for new bridge; old one in service. Brazos River bridge completed. Liberty County is now being paved, to be completed during 1927. The subgrade was completed two years ago. Harris County is financed for paving. Sugar Land district, Ft. Bend County, is now paving; subgrades completed a year ago. This will complete all paving and bridges for this 140 miles. The costs will total close to \$7,000,000. Average cost \$50,000 per mile. The impassable conditions that have discouraged all travel will be removed before another winter sets in. The Highway Department is cooperating to maintain proper detours.

21.—FROM RICHMOND, TEXAS, west to San Antonio are 191 miles with 65 miles paved. Richmond to East Bernard, 18



MISSISSIPPI GULF COAST

Concrete paving and curved sea wall protection at Biloxi costing \$100,000 per mi. 29 mi. of sea wall, paving and concrete bridges now nearing completion. The sea wall now building is a different type.



THE TALLAHASSEE COUNTRY, FLORIDA

The Old Spanish Trail is financed for paving across the State and the work is actively progressing. The average cost, including bridges, is estimated at \$44,750 per mi.