

**PARK HOTEL** leads. **HOTEL BAKER**, lower priced, good. Five cabins and apart. camps. Free camp space, also cabins, 20 mi. west at Gage; camp space at Wilna. Inf.—Chamber of Commerce.

**CONTINENTAL DIVIDE**, 32.5 mi. west of Deming; 27.5 mi. east of Lordsburg. Elevation 4,584 ft. East, the water goes to the Atlantic; west, to the Pacific.

\***LORDSBURG**. A railroad division point. Lead, copper and silver mines in the surrounding country. **HOTEL HIDALGO**, new, all rms. with bath. **HOLLEN**, moderate prices. Three cabin camps.

**GRANITE GAP**. Elevation 4,400 ft. West of Lordsburg 28 mi. east of Rodeo 20 mi. Cut thru granite mountains that rise in beauty out of the desert. The ocotilla, the spindling cactus of the arid, rocky places, is seen in this section; its flowers in spring a scarlet flame and one of the mystic beauties of the desert.

**RODEO**. A railroad station village. Mining and ranch interests around. Country hotel. Camp space. Cabin camp, \$1.00 and \$1.50.

## NEW MEXICO-ARIZONA STATE LINE

2 mi. West of Rodeo

### ARIZONA—501 MILES

#### Road Conditions

The road across Arizona is well built and well maintained; gravel prevails. Paving is being extended.

#### Description of Country

The scenery thru the eastern part is varied and interesting—majestic mountains and rich mining districts; deserts that attract by their varied cacti growths and deserts turned to green fields by irrigation. West of Buckeye dry sands and a drab country are traveled to Yuma but small hotels, auto service, camp sites and cabin camps have developed along the way. The people are hospitable. The drive is an interesting experience.

Arizona is but 16 yrs. old as a state. Its industry, mining, agriculture, education, road and city building are examples of American enterprise. Numerous ranch resorts are in the mountains and valleys. In summer the elevation cools the temperature. In winter southern sunshine instead of snow and ice.

#### Old History

The Santa Cruz Valley—Tucson, Nogales, and into Mexico—was one of the great seats of mission and colonizing effort by the Spaniards. Numerous missions were in that territory. Some still remain in Mexico south of Nogales. The beginning in Arizona was in 1602. The Mission San Xavier del Bac, 9 mi. south of Tucson, was apparently founded in 1700. The building, which still stands and functions as a church, restored after years of disaster and neglect, was one of the finest structures erected by the padres in the New World. From the Santa Cruz Valley mission works were extended across Arizona to Yuma, down the Gila Valley of the Old Spanish Trail of today. From this base also the expedition started that founded San Francisco in 1776. The great mission chain along the California coast had been started in 1599 at San Diego.

In this Arizona, New Mexico and Northwest Texas country Coronado and his princely expedition spent three years, 1540—42, searching for the Cities of Gold and the land of the Gran Quivira.

**DOUGLAS**. A thoroughly modern city, the smelting center for the copper mines of the Phelps-Dodge and the Calumet & Arizona companies at Bisbee. The monthly production 21,000,000 lbs. Near is the Chiricahua National Monument in the Coronado National Forest where Nature and her geni have fashioned fantastic figures in the rocks. Ranch camps and resorts in the mountains. Across the Mexican border fence is Agua Prieta with a pleasant welcome to the traveler. **HOTEL GARDEN**, opens spring 1929; all rms. with bath. **HOTELS PALOMAR** and **WINTON**, lower priced, good. Good cabin camps. Inf.—Chamber of Commerce.

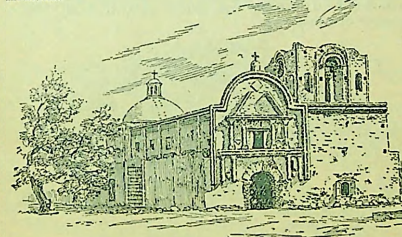
**BISBEE**. Phelps-Dodge and the Calumet & Arizona copper mines; three of the greatest in the country. Production reaches \$57,000,000 monthly. Bisbee is built in a canyon with the houses over one another, clinging to the canyon walls; a never-to-be-forgotten picture. The Warren District around these mines including Bisbee embraces over 15,000 people. The crowded highway thru the crooked canyon is essentially the city of Bisbee. Mountain spring water at Bisbee. Cattle and goat ranches in the mountains and valleys, mountain and ranch resorts for a stop-over. **COPPER QUEEN HOTEL** leads. **GOLDEN HOTEL** upstairs good rms. Cabin camps. Free camp at Lowell, 1 mi. east. Inf.—Chamber of Commerce.

**BISBEE SUMMIT** 3 mi. west of Bisbee. 6,030 ft. highest point on the Old Spanish Trail. The highway here is a beautiful piece of engineering, easily driven, while the mountain peaks and canyons are impressive pictures.

Three other OST summits are: 8.5 mi. west of Van Horn, Texas. 4,630 ft.—the Continental Divide between Deming and Lordsburg, N. M. 4,584 ft.—7 mi. west of Boulevard, California 4,103 ft.

\***TOMBSTONE**. Once a turbulent city as men sought the riches in silver buried in the mountains; \$40,000,000 were taken from the mines. One pocket produced about \$840,000, known today as the Million Dollar Stope. Tombstone now is a mine of interest to men of literature for it was one of the last stands of the Wild West where men fought and schemed and left behind tales now told by gray-bearded men to enrich the history of the Anglo-Saxon conquest of the West.

Mountain spring water at Tombstone. Several country hotels. **ARCADE** leads. Cabin camp, good. See A. H. Gardner, OST Vice-President for any information about Arizona.



TUMACACORI MISSION RUIN, ARIZONA

South on the Nogales Loop from Tombstone or Tucson

Mission San José de Tumacacori, Arizona, 18 mi. north of Nogales. Now preserved as a National Monument. Father Kino, a Jesuit Missionary, began his visitations in this Santa Cruz Valley in 1691. When this building was erected is not known.

A group of 16 missions was built below and above Nogales, a group that ranks with the San Antonio, Texas, and the California group in majestic construction and courageous work. Five of these missions were in the present Arizona. The missions Tumacacori; San Xavier del Bac; San Gabriel de Guaymas; San Cayetano de Calabasas; and St. Gertrude de Tubac. Other missions are believed to have been at Tucson. Many of the churches in Mexico are still in service, visited from Nogales.

#### NOGALES—ASTRIDE THE MEXICAN BORDER

Nogales is a modern city of 15,000 people, the border line fence separating the U.S. and Mexico runs thru a main street. It is the gateway to the rich west coast of Mexico. The road from Tombstone to Nogales is good, the scenery splendid. From Tucson to Nogales the road is thru the Santa Cruz Valley, passing Tubac and Tumacacori. The chambers of commerce at Tombstone, Tucson and Nogales have interesting leaflets.