

From San Diego From St. Augustine
899.4-----ANTHONY, N. M.-STATE LINE-----1917.6

Pop. 211 mi. Concrete Pavling.
Pop. 938. Elevation 4793 ft. Road follows along the Rio Grande northward thru the irrigated districts.

878.3-----MESILLA PARK, N. M.-----1938.7
66.7 mi. (Poor road 37.5 mi. Mesilla Park to county line; 29.4 mi. to Gravel to Deming.)

Pop. 1000. Elevation 3578 ft.
A desert is entered after crossing the Rio Grande 32 mi. W. of Mesilla Park. The road is unpaved for 32 mi., but in wet weather. Plans are prepared for building a new road during 1925. Another rough section begins at Steins Pass 17 mi. W. of Lordsburg and extends 32.8 mi. to the Arizona line west of Rodeo. This road is financed for reconstruction fall of 1925. The other mileage across New Mexico is now federal standard construction. New Mexico suffers from a lack of road-building material, and in these two poor sections loam, expensive hauls are involved.
Oil and gas 26 mi. W. at Aden; 39 mi. W. at Cambrey; 43 mi. W. at Akela. Scattered irrigated farms 8 to 16 mi. E. of Deming. All conveniences at Deming, Lordsburg and Rodeo. Pure soft drinking water at these places.

SUGGESTIONS
Any car can have an accident. It is best to carry emergency food, full thermos bottles and a desert bag with water. Keep filled with oil and gas, also see that the emergency equipment of all good travelers is complete—chains, towing rope, extra fan belt, spare etc.

811.6-----DEMING, N. M.-----2005.4
61.8 mi. Good Gravel.

Pop. 3212. Elevation 4215 ft.
Still large areas of desert but good road promises pleasant journey. Oil and gas 21 mi. W. at Gage; 30 mi. W. at Wilna, also food; 42 mi. W. at Sagar.
Deming is a junction point for several important railroads. All conveniences. Pure soft water.

INFORMATION AND SERVICE
Deming Chamber of Commerce.

749.8-----LORDSBURG, N. M.-----2067.2
48.0 mi. Gravel. (Good for 17 mi. W., rough for 31 mi. to Rodeo.)

Pop. 1325. Elevation 4242 ft. Then 31 mi. of desert and mountainous country. See suggestions above. This poor section financed for reconstruction fall of 1925. Lordsburg is a railroad division point. All conveniences. Pure soft water.

INFORMATION AND SERVICE
Chamber of Commerce. Willard E. Holt.

701.8-----RDEO, N. M.-----2115.2
1.8 mi. Rough.

Pop. 267. Elevation 4118 ft.
All conveniences at Rodeo. Pure soft water.

700.0-----NEW MEXICO—ARIZONA LINE-----2117.0
50 mi. Gravel.

A pleasing drive for the road is good and the scenery improves. Oil and gas 11.6 mi. W. at Apache.

THE MAIN STREET THRU ARIZONA

The road across Arizona is good and is well maintained; they call it the Main Street thru Arizona. The scenery is varied and interesting—mountains and rich mining districts; deserts that are interesting in their varied cactus growths; valleys made fertile and rich by irrigation. Arizona is but 13 yrs. old as a state. Its industry, mining, agriculture, education, road and city building are a tribute to its people and its irrigation come to the traveler. In summer the elevations cool the temperature. In winter snow and ice do not block the road.

From San Diego From St. Augustine
560.0-----DOUGLAS, ARIZ.-----2167.0
Zero at Hotel Gadsden.

24.6 mi. Concrete Pavling.
Pop. 9918. Elevation 9666 ft.

Douglas is a modern type of city and home of great smelters for the ores of the Biabee district. Phelps-Dodge and the Calumet & Arizona mines. Monthly production 13,000,000 lbs. of copper.

INFORMATION AND SERVICE
Chamber of Commerce at Gadsden Hotel.

AGUA PRIETA
In Mexico at southern edge of Douglas. Let Chamber of Commerce direct you to the right places.

625.4-----BISBEE, ARIZ.-----2191.6
Zero at Depot.

26.3 mi. Gravel and Asphalt.
Pop. 9205. Elevation 5294 ft.
Continental Divide crossed at 6036 ft. elevation. Monument marks the crest; the highest point on the Old Spanish Trail.

Bisbee is the center for the great copper mines of the Phelps-Dodge and the Calumet & Arizona interests. It is built in a canyon with the houses on one another and clinging to the canyon walls. 3000 men are employed in the mines. The Warren District around these mines including Bisbee employing over 15,000 people. The crowded highway thru the canyon is essential to the city of Bisbee with its thousands of inhabitants; the highway is a beautiful piece of engineering over the mountain 6000 ft. high, easily driven and a mountain picture of impressive beauty.
Mountain spring water at Bisbee.

INFORMATION AND SERVICE
Bisbee Chamber of Commerce.

NACO
On the border 8 mi. from Bisbee, both sides of the International Line like Nogales.

599.1-----TOMBSTONE, ARIZ.-----2217.9
26.3 mi. Gravel.

Pop. 1178. Elevation 4541 ft.
Tombstone was once a turbulent city as men sought the riches in silver buried in the mountains; \$40,000,000 were taken from the mines. One pocket produced about \$840,000.00; this is known today as the Million Dollar Mine. Tombstone now is a mine of interest to men of literature for it was one of the last stands to men Wild West where men fought and schemed and left behind tales now told by gray-headed men to enrich the history of the Anglo-Saxon conquest of the West.
Beginning 12 mi. W. of Tombstone the irrigated valleys and set with numerous artificial lakes shaded with big trees. Their village of St. David is 20 mi. W. Mountain spring water at Tombstone.

NOGALES
Pop. 15,000. Elevation 3969 ft.
Branch at Tombstone for Nogales, the modern city, part in the United States and part in Mexico with the line fence thru a main street. Nogales is the gateway to the rich western coast of Mexico, a city of refinement and character and every convenience for the traveler. The road is fine and a scenic treat. No traveler should fail of a visit. From Nogales to Tucson the road is up the Santa Cruz Valley. The missionary fathers built some of the earliest and greatest works in that valley above and below Nogales. The old missions Tumacacori and San Xavier lie between Nogales and Tucson.

INFORMATION AND SERVICE
A. H. Gardner, OST Vice President, would like to have you call on him at Tombstone for information.

572.8-----BENSON, ARIZ. (San Pedro River)-----2244.2
52.4 mi. Gravel.

Pop. 825. Elevation 3578 ft.
At Vail 21 mi. E. of Tucson a trail leads to Colossal Cave that has been explored for 40 mi. It is open to visitors. The story is that about 25 years ago wounded train robbers were traced there by the blood and the existence of the cave became known. After several days one robber was found dead; the other escaped and is believed to have returned later and recovered the stolen money.

From San Diego From St. Augustine
520.4-----TUCSON, ARIZ.-----2296.6
69.8 mi. (Concrete 5.4 mi. then Gravel to Florence.)

Pop. 20,292. Elevation 2386 ft.
Tucson is another modern city of refinement and retaining the charm of the old Spanish atmosphere. It is set in a desert rich in the mystery of its varied it and fantastic cactus growths. Mountains rear their peaks round about and Navaho lavishes its colorings. The irrigated districts are developing extensively. The University of Arizona is at Tucson, chaste and refined in its structural development. The padre two centuries ago built one of their greatest missions there among the Indians. This mission, San Xavier, is 9 mi. south, founded about 1692. The present building, erected and later is well preserved despite its struggles and disasters. The Pima Indian Reservation is around this mission. South toward Nogales is the old Tumacacori mission, now a National Monument, and around Nogales are others. The Santa Cruz Valley was an early and active mission district.
Irrigation for 10 mi. westward then desert and a fine road. Stock with supplies.

INFORMATION AND SERVICE
Tucson Chamber of Commerce.

450.8-----FLORENCE, ARIZ. (Gila River)-----2366.2
67.3 mi. Paving and Gravel.

Pop. 1161. Elevation 1490 ft.
Irrigation lies around Florence. The new Coolidge Dam is to be built across the Gila River above Florence and that will become another richly cultivated section. W. of Florence is desert again for 43.5 mi. to Desert Wells, and oil and gas. W. of Florence 36.9 mi. Apache Junction and the road to Roosevelt Dam. Beyond Desert Wells irrigation begins; a highline canal from the Roosevelt Dam is crossed and from there thru Mesa and Tempe to Phoenix and beyond the noted irrigated Salt River Valley is traveled. There are three dams, the big Roosevelt Dam and the Horse Mesa and Mormon Flats. When filled these reservoirs impound water sufficient for three years.

383.5-----PHOENIX, ARIZ. (Salt River)-----2433.5
Zero at Adams Hotel.

34.6 mi. Paving.
Pop. 29,053. Elevation 1682 ft.
Phoenix is the capital of the State. Its beauty and interest are the pride of Arizona. Nice streets, homes and public buildings. Irrigation gives attractive landscape gardening. Phoenix is the commercial center for the Salt River irrigation districts whose products are nationally noted and locally profitable. The Roosevelt Dam is 90 mi. E. from Phoenix.

INFORMATION AND SERVICE
Phoenix Chamber of Commerce.
Automobile Club of Arizona, 401 W. Jefferson St.

348.9-----BUCKEYE, ARIZ.-----2468.1
44.0 mi. Paving and Gravel.

Pop. 726. Elevation 980 ft.
The Buckeye and the Arlington irrigation districts are passed, supplied with water from a head diversion dam up the Gila River. Gillespie Dam is crossed down the river 20.8 mi. from Buckeye. All conveniences in this section. The road uses the apron of the Gillespie Dam for crossing. The road is seldom too high; when it is the Highway Department places a truck in service. A bridge is planned. The road follows down the Gila River from the dam.

304.9-----GILA BEND (Gila River)-----2512.1
29.5 mi. Gravel.

Pop. 300. Elevation 736 ft.
Irrigation from Gillespie Dam now waters about 10,000 A. below Gila Bend; there is capacity for 50,000 A. Branch at Gila Bend for Ajo, one of the largest copper mines in Arizona. All conveniences at Gila Bend.

It raining or wet, cross the draws in the western country in low or second gear to avoid killing the engine.

From San Diego From St. Augustine
275.4-----SENTINEL, ARIZ.-----2541.6
56.7 mi. Gravel.

Pop. 50. Elevation 657 ft.
Typical southwestern desert mountain pass. Agua Caliente (Hot Springs) 15 mi. N. Medicinal springs and resort for tourists. All conveniences at Sentinel.

218.7-----WELLTON, ARIZ.-----2598.3
39.7 mi. Gravel, some rough.

Pop. 85. Elevation 225 ft.
Sandy mesa country. Wellton is a center for a proposed irrigated district to be supplied by wells. All conveniences at Wellton.

179.0-----YUMA, ARIZ. (Colorado River)-----2638.0
Zero at Bridge. Colorado River the State Line.
46.8 mi. (Paving, Gravel and 6 mi. of Plank Road).
Pop. 4237. Elevation 139 ft.
Irrigation from Lexington Dam across the Colorado River. The present cultivated areas are 12 mi. S. of Yuma at Somerton.

132.2-----HOLTVILLE, CAL.-----2684.8
11.2 mi. Paving to be completed 1925.
Pop. 1347. Below sea level, 19 ft.

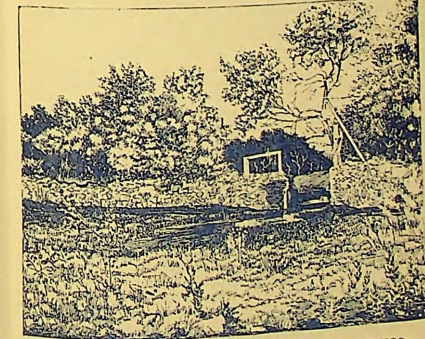
121.0-----EL CENTRO, CAL.-----2696.0
121.0 mi. Paving and Gravel.

Pop. 5454. Below sea level, 51 ft.
Entrance northward to the Imperial Valley. South to Calexico and Mexicali border towns.

0.0-----SAN DIEGO, CAL.-----2817.0
Zero at OST Zero Milestone at the Plaza.

Pop. 74,683. Elevation 46 ft. at City Hall. OST Director, Ed Fletcher, Jr.
San Diego is the Pacific Terminus of the Old Spanish Trail. It is the beginning of the Spanish occupation of California. The first mission, San Diego de Alcalá, was started in 1769, then followed those other sanctuaries "a day's journey apart" northward on and beyond the Atlantic slope were fighting England for free. Spain was peacefully building the missions along the Pacific slope. Earlier than this her missions at Tucson and Nogales, at Santa Fe, at El Paso and Yaleta, at San Antonio, St. Augustine and elsewhere, and her works all thru these Southern Borderlands were and her works all thru these Southern Borderlands were crowning her name with an interest that will live through the ages. The legends and landmarks of a romantic past lie along the pathways and out among the byways of the Old Spanish Trail.

INFORMATION AND SERVICE
San Diego Chamber of Commerce.



OLD DAM, MISSION IRRIGATING SYSTEM, SAN DIEGO