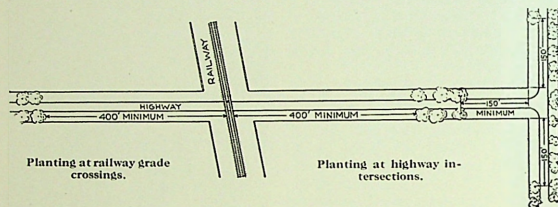


### III. Intersections, Curves and Railroad Crossings

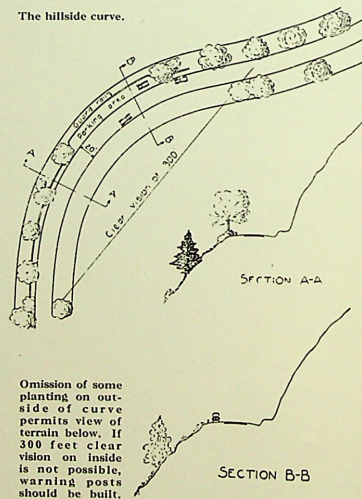
As a part of the location problem must be included the set-back of planting from road intersections, curves and railroad crossings.



While it may be safe to preserve some native trees in these locations, and make the situations safe by trimming any low branches which block clear vision of approaching traffic, it is safer not to plant any more trees in this area.

To leave the roadside treeless for 150 feet in each direction from an intersecting road may appear over-cautious, but certainly the loss of one life or even one serious accident due to imperfect vision because of such planting is not justified on the score of the slight added beauty gained. The same reasoning holds for omitting planting for 400 feet in each direction from a railroad grade crossing. Curves are a somewhat different problem, depending on the degree and length of curvature, but it is wise either to leave out planting on the inside of a curve, or at least to keep it judiciously thin.

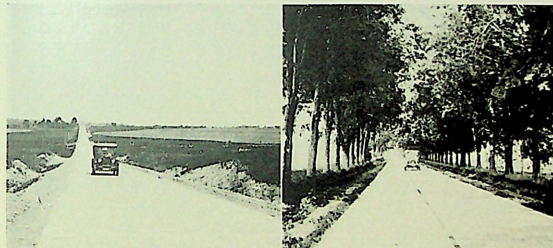
The hillside curve.



### IV. Telephone and Telegraph Poles and Wires

A right-of-way for these necessary service lines should be designated which will permit full growth of trees in their selected location. Poles should be placed as near the sides of the right-of-way as possible, preferably centering 3 feet or less from the property or fence line. This permits a fairly free space for the planting.

While existing trees have much to do with location of pole lines, it is well to adhere to a standard wherever practicable, both in clearing new rights-of-way and in planting those already in use.



Nothing shows more graphically the contrast between the barren highway and the tree-bordered road than these views of actual conditions.

Trees which have wide, spreading branches should be planted farther from the pole line than those with compact head, or of smaller habit, but never should they be less than 12 feet from a pole.

Generally, the wires should be 18 feet above all traveled portions of a road, cross-roads or entrance drives and be not lower than 10 feet from the ground outside the traveled area.

Underground location of wires will gradually come into use, but for the present, at least, the initial cost is such as to justify underground construction only in thickly populated sections.

### V. Staking

The actual staking of tree and shrub locations should be done by a competent forester or landscape gardener, equipped with sufficient help and paraphernalia to make and record appropriate observations on the soil, the fertilizer needed and any necessary changes of grade. Stakes should be marked with designation of species of trees to be planted and notes on their exact location kept for the guidance of the planting crew.

Stakes should be placed within the limits prescribed as standard, with due regard to keeping the drainage ditches unobstructed, preserving