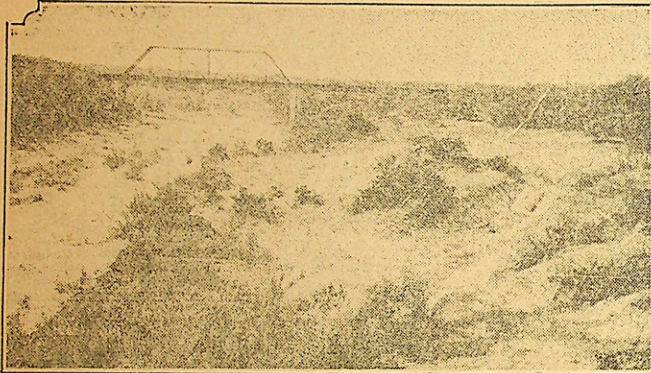


SOCIETY AND FASHIONS

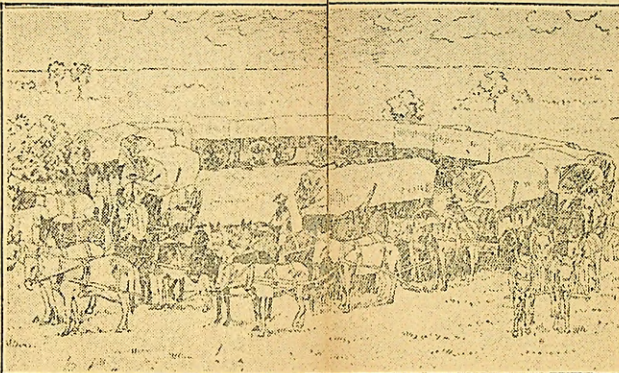
San Antonio Express

SAN ANTONIO, TEXAS, SUNDAY MORNING, MAY 11, 1930.

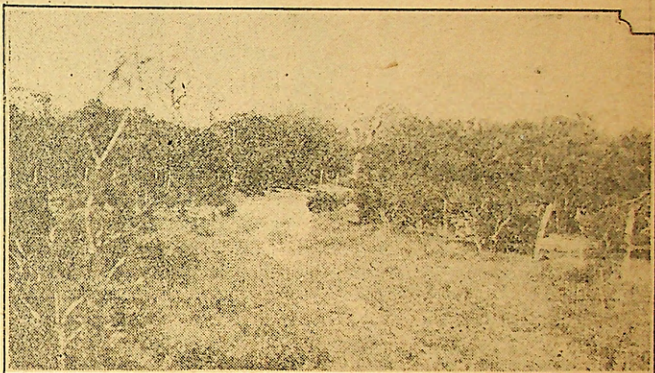
Chihuahua Trail, Old Artery of Commerce, Linked U.S. and Mexico



Where the Trail Crossed the Nondo River



Method of Forming Corral When on the Trail



Marks of the Chihuahua Trail Near Uvalde

