

SENTINEL. A desert country. THE SENTINEL, small country hotel. Free camp, also cabin camp \$1.00. Keep stocked with water, supplies and emergency equipment. Aztec 14 mi. west; store, garage, meals, camp.

MOHAWK. Two stores, two garages, lunch. Free camp place; also cabins. Water is hauled.

WELLTON. Sandy mesa. Irrigation from wells a future possibility. Fred Hughes the active personality. Fred's WELLTON HOTEL best between Phoenix and Yuma; 24 rms. restaurant all night. Fred's garage, good. Free camp and showers.

NOTE. The new road thru Telegraph Pass between Wellton and Yuma is open to traffic. This shortens the distance. The railroad crossing on the east end is unsettled leaving 1½ mi. there rough.

YUMA. Jet. of Gila and Colorado rivers. Gateway to Southern California. Ancient Spanish river crossing in the conquest and development of the Southwest. Today Yuma is a busy, growing city. Yuma Indians and their wares add a picturesque touch. Irrigation from Laguna Dam on the Colorado River; the cultivated areas 12 mi. south of Yuma. Time changes; reset your watch.

The DEL MING HOTEL leads; also HOTEL ARIZONA. HOTEL AIRDMORE, upstairs rms., good. Several cabin camps with numerous cabins. Inf.—Chamber of Commerce.

ARIZONA-CALIFORNIA STATE LINE Colorado River

SOUTH CALIFORNIA—178 MILES

Pavement and oiled gravel, 146 mi. with remainder, 32 mi., decomposed granite. The Sand Hills, one of the real deserts and long a terror to travelers, now good pavement. The Mountain Springs grade with its steep climbs now concrete.

The Old Spanish Trail in California is close to the Mexican Border for many miles. West from Yuma 7 mi. and 1½ mi. south on the border are the head gates of the Imperial Valley irrigation; the water comes thru Mexico. Across the line is Algodones, Mexico, with seven saloons, one it is claimed costing \$17,000. South of Holtville and El Centro are the Mexican border towns of Calexico and Mexicali. In the Imperial Valley the traveler is 60 ft. below sea level in the bed of the old salted Sea; shortly the mountains are crossed at 4,103 ft. elevation; thru the mountains are resorts and camps a-top the world; at San Diego and the sea are the hills and valleys.

San Diego is the end of the Old Spanish Trail and the beginning of the last works of the Spanish in the U.S. In 1769 the San Diego mission was founded—201 yrs. after St. Augustine. During the American Revolution the Spanish were building that great chain of missions up the California coast.

FT. YUMA. A settlement at the Yuma Indian Reservation. Officials here search your car and baggage to prevent entry of plant or fruit diseases. Cabin camp, 25c to \$1.25.

GRAY'S WELL. West from Yuma 21 mi., in the sand hill section. Good water from a deep well, phone, store. All night lunch, gas and other service at Peg's Place. Peg Hunt is said to know the highway situation in the southwest and he appreciates travelers stopping for any service.

HOLTVILLE. One of the Imperial Valley centers. Two hotels. Three cabin camps, good. A road south to Mexicali, Mexico. Inf.—Chamber of Commerce.

EL CENTRO. Commercial center of the Imperial Valley, one of the great irrigation districts of the world. A busy, prosperous city. HOTEL BARBARA WORTH leads, a fine hotel. OREGON HOTEL, remodeled, refurbished. Good cabin camp. Calexico and Mexicali, border towns, south. Inf.—Chamber of Commerce. Also Auto Club of Southern California branch.

MOUNTAIN SPRINGS. 35 mi. west. Store, garage, water. Established by Government in 1846. Devil's Canyon near. Splendid scenery thru these mountains. 7% grade, concrete pavement.

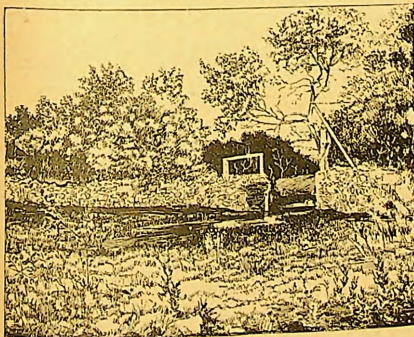
JACUMBA HOT SPRINGS. 44 mi. west. Mountain resort for Imperial Valley people. Elevation 2,800 ft. Hot sulphur baths. Cold spring. Concrete pool, dance hall, etc. HOTEL VAUGHN, 65 rms. new, fine. Cabin camp, 25c to 75c. Inf.—Bert L. Vaughn. Also old Jacumba (Ha-coomba) with modern hotel. Mistletoe Lodge 1 mi. west and cottages.

BOULEVARD. Store and supplies. Summer resort. Camp. West to San Diego 70.5 mi. are settlements, mountain, valley and spring camping places, cabin auto camps, furnished cabins, small hotels, meals, etc. The mountain summit is passed at 4,103 ft. In Arizona, New Mexico and Texas higher elevations are reached. These are listed under Bisbee, Ariz. summit.

SAN DIEGO. This is the Pacific Terminus of the Old Spanish Trail. It is the beginning of the Spanish occupation of California. The first mission, San Diego de Alcalá, was started in 1769, then followed those other sanctuaries "a day's journey apart" northward and beyond San Francisco, twenty-one in all. While the patriots on the Atlantic slope were fighting England for freedom, Spain was peacefully building the missions along the Pacific slope. Earlier than this her missions at Tucson and Nogales, at Santa Fe, at El Paso and Ysleta, at San Antonio, St. Augustine and elsewhere, and her works all thru these Southern Borderlands, were crowning her name with an interest that will live thru the ages. The legends and landmarks of a romantic past lie along the pathways and out among the byways of the Old Spanish Trail.

Hotels.—U. S. GRANT, largest and best. CHURCHILL, moderate and good. SAN DIEGO, popular and well liked. ADMIRAL, popular prices, good. PICKWICK, new, good; the Pickwick bus station headquarters. Also DEL CORONADO, MARYLAND and SOUTHERN.

Auto camps—twelve cabin camps. Inf.—Chamber of Commerce. Also Auto Club of Southern California branch.



The Mother Mission of California
Old Dam, Mission Irrigating System, San Diego