



COUNCILOR

1922

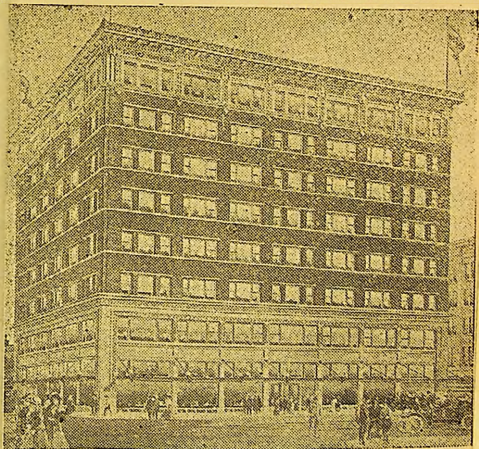
This is to Certify that

M _____
of _____
Has been appointed Councilor for _____

1920-100
212/100

View San Antonio--
--from our Roof

VISIT OUR TEA ROOM



Catering to Every

TOURISTS' NEED.
EXCLUSIVE SHIRT DEPARTMENT
FOR MEN AND CHILDREN.
COMPLETE LINE OF WOMEN'S
WEARING APPAREL

WOLF & MARX COMPANY

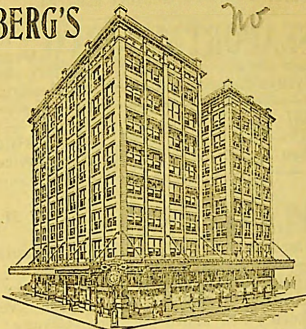
Houston Street - Soledad to Main Ave
THE TOURISTS' EXCLUSIVE BIG
STORE FOR YOUR EVERY NEED.

1F

To be taken out in trade

HERTZBERG'S

THE
DIAMOND
HOUSE
SINCE
1878



HERTZBERG'S
CORNER

"at the Sign
of the Clock"

HOUSTON ST. Cor. ST. MARY'S

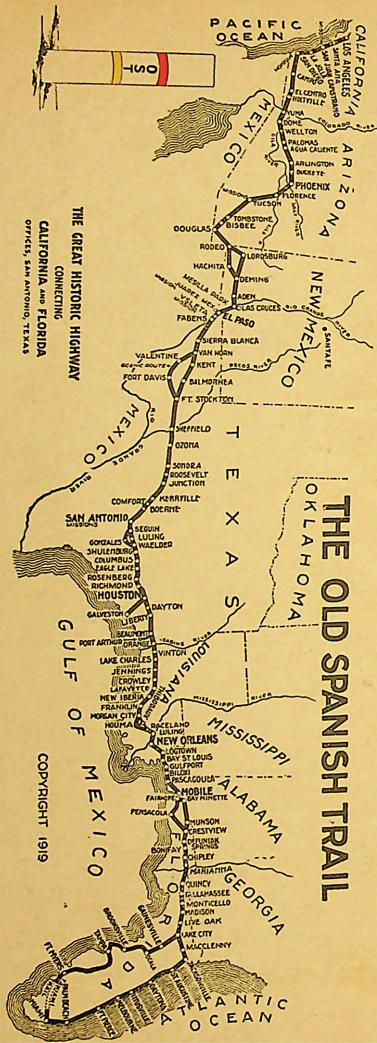
Sun and Dust Goggles for the Motorist—
Eyeglasses Repaired—
Thermos Bottles—
Compasses, Wrist Watches—
Fine Watch Repairing—

Be sure to visit Hertzberg's
and see the matchless collection
Diamonds, Jewelry
Silver, and Gifts for all oc-
casions also the

GIFT ROOM
\$1 to \$10
No More—

HERTZBERG
JEWELRY CO.

SAN ANTONIO, TEXAS



THE GREAT HISTORIC HIGHWAY
CONNECTING
CALIFORNIA AND FLORIDA
OFFICES, SAN ANTONIO, TEXAS

THE OLD SPANISH TRAIL

COPYRIGHT 1919