



Oaks, such as these, bordering the even concrete add to the traveler's delight and comfort.

In placing stakes directly in front of buildings immediately adjacent to the highway, the consent of the owner should be obtained.

When the survey and staking are completed, the planting crew will be in possession of full information regarding the quantities of stock, size of holes to be made, amount of fertilizer needed, the number and kinds of tools, the number of men and the time required to complete the work.

VI. Planting Instructions

Select stock which is healthy, well shaped and bushy rooted.

Dig hole somewhat larger than actual spread of roots.

Have earth soft and mellow at sides and bottom of hole.

Trim back to the strong, healthy part any roots which have been broken or bruised, with a clean, slant-cut facing down.

Trim top back, proportionately or more, to the loss of root system, doing all cutting on side branches only, not the top.

No roots should be bent, or twisted into a hole. Make hole amply large, a good rule being to leave six inches open hole beyond ends of all roots.

Use only well-rotted manure or good commercial fertilizer, and place in bottom or sides of hole, not letting it come in direct contact with roots.

Set tree slightly higher than it has been growing in nursery. It will settle slightly. It is important that it be not set too deep.

Place fine earth, preferably top or black dirt, next to the roots; spade under, and rock tree or shrub back and forth slightly, or shake up and down. This causes the pulverized earth to settle in close contact with fine roots.

When roots are all covered, tamp or pack with heel until earth is compact and there are no air pockets in contact with roots.

Water copiously.

Cover to ground level with more fine earth. Leave this earth cover loose to prevent loss of moisture by capillary attraction.

Cultivate area every few weeks during the first season and do not allow weeds to grow.

A proper planting of healthy stock assures higher resistance to future attacks by pests or drought.



Years ago some far-sighted man planted these elms.

views, and safeguarding traffic. No stake should be placed nearer than 12 feet from telephone poles or closer to existing trees than the standards permit. When the existing tree is unhealthy, or short-lived, stakes should be so fixed that the new trees will thrive for a number of years before the undesirable tree is removed.

VII.

Care After Planting

Trim for only four purposes:

1. To take out dead wood,
2. For safety to traffic,
3. To give way for wires, and
4. To obtain views.



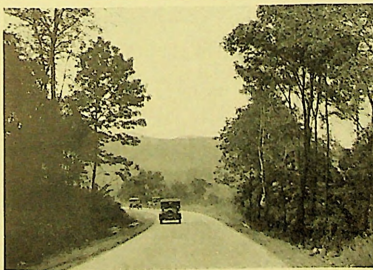
Roadsides in the Gulf states and California have their distinctive plantings of palms or pepper trees.

For the sake of beauty it is better to leave trees untrimmed; let them take their natural shape, and not "head" them or "trim them up" as many inexperienced tree trimmers want to do. A good rule is to trim out only dead or unhealthy branches.

Low branches that hinder clear vision of all traffic should be removed, usually to a height of 10 feet above the road. Trim carefully to give wires an unobstructed right-of-way. Branches should not interfere with the wires in a windstorm.

In trimming, the cut should be made flush with the parent branch or trunk, leaving no stub. This assures the quickest possible healing and the least opportunity for rot or infection. A cut should be made on the under side of the branch first to prevent stripping bark from the parent branch. Paint cut with good tree paint or creosote stain.

Unless there is a well-organized department for planting and caring for trees and shrubs, it is well to have both planting and maintenance work done by a reputable nursery, under contract, guaranteeing replacement of defective stock, or of failures within one year or other suitable period.



Nature herself framed this view across the valley to the blue hills in the distance.