

NORTH FLORIDA

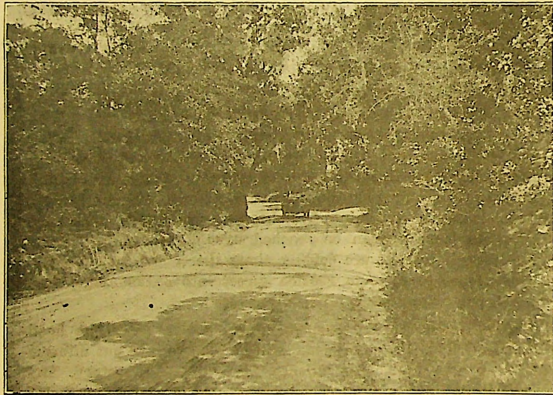
The Section Tourists Should See

J. D. SMITH, President North Florida Chamber of Commerce,
Secretary of Florida State Road Department.

North Florida is a section of the country every tourist should see, who may visit the State. Some parts of it have no fine, high priced hotels, but every tourist will get good fare at a reasonable price.

Visitors will enjoy the many interesting places, especially those who love the beauties of nature. This territory covers twenty counties, or more, beginning on the west at Pensacola and extending east to Jacksonville. This part of the State is comparatively unknown to the tourist, who hears so much of Florida, by reading the immense amount of literature sent out from South and East Florida. It is true those parts of the State, to a great extent, represent the money interest of Florida, and they are so well advertised and have such fine hotel accommodations that the railroads are giving special attention to routing tourists and prospectors in that direction. Yet, we have ten different lines of railroad operating in the northern part of the State. For the motorist we have the Old Spanish Trail, that runs across the State from the Alabama line on the west, to the Atlantic ocean on the east; also the North and South Bee Line Highway, and the Dixie Highway through North Florida.

North Florida is the agricultural section of the State. All crops are successfully grown here that can be grown anywhere in the South. Fine sections for stock and dairy farms, diversified crops, as well as citrus groves. It has beautiful streams and lakes, and the most attractive sea coast in the State. Let the tourist begin at Pensacola and travel through this section to Jacksonville, or vice versa, and he finds splendid opportunities for paying projects never before seen in the State. The country continually changes, from level lands, through hills, from pine forest to hardwood sections, clay subsoil into gray lands that produce



THE PICTURESQUE DIXIE HIGHWAY
Coming into Tallahassee, Florida, from Thomasville, Georgia.