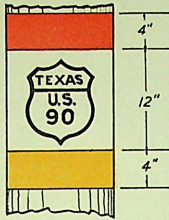
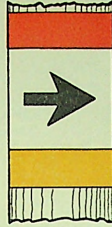




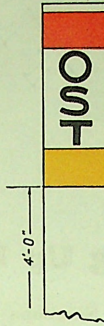
NO. 1  
ROUTE MARK



NO. 2  
ROUTE MARK

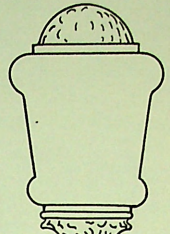


NO. 3  
TURNING MARK



NO. 4  
O.S.T. POST  
6" x 6" SQUARE

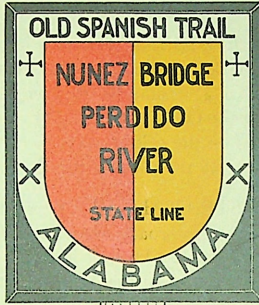
POLE AND BRIDGE END MARKING  
STENCILS WILL BE SUPPLIED FOR THE ABOVE  
PRICE LIST ON BACK



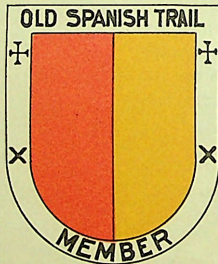
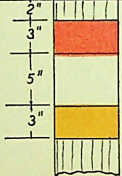
NO. 7  
BOULEVARD LIGHT



NO. 5  
SHIELD DIRECTION SIGN  
AND FOR SPECIAL SIGNING



NO. 6



NO. 8  
MEMBER'S EMBLEM  
FOR OUTDOOR SIGNS  
LENGTH 1/8 MORE THAN WIDTH

### SHIELD SIGN DIMENSIONS

WIDTH—Red-yellow field six times the width of the white band.  
LENGTH—1/6 longer than width. The black border background is from 1 to 2 ins.—just enough to set off the shield; black moulding instead of plain paint is nicer.  
DISTANCE FROM GROUND—Where headlights at night will spot them; top 6 ft. from ground is about right.  
LETTERING—Heavy block letters, deeper than wide.  
SIZE—Avoid oversize; big signs and big letters are not quickly read and look cumbersome. Above signs are 24x28 ins.  
THE SHIELD DESIGN is from old Spanish art works and heraldry.

### BOULEVARD LIGHT SIGNS

The boulevard light signs will be supplied for \$1.25 ea., f.o.b. San Antonio. Heavy 18 gauge steel, rust-resisting coated, weather-proof baked enamel, deeply embossed, 20 ins. long.

### COPYRIGHTED

These designs are copyrighted. Members and friends are privileged to use them and urged to help make the route marking attractive. But any improper or illegal use will be prosecuted.

### OLD SPANISH TRAIL HEADQUARTERS, SAN ANTONIO, TEXAS

S. H. PECK, President, Mobile	HARRAL AYRES, Managing Director, San Antonio
Kenneth Wimer	Harral Ayres Leon N. Walthall Percy Tyrrell Werner N. Beckmann
Mrs. Alex L. Adams	Mrs. F. W. SORELL, National Director
Mrs. L. W. Evans	Mrs. J. L. Browne
Mrs. H. A. Moos	Mrs. Henry Drought
Mrs. J. T. Smith	

MRS. A. C. SEISER, Chairman Headquarters Model Section.

DISTRIBUTED BY THE

## Robert E. Lee Hotels

San Antonio, Tex. St. Louis, Mo. Kansas City, Mo. Laredo, Tex.  
PERCY TYRRELL, PRESIDENT

Member Old Spanish Trail Executive Board

The Marking and Beautifying are now urged that the Old Spanish Trail may become more attractive and popular.



Robert E. Lee Hotel, San Antonio, Tex.