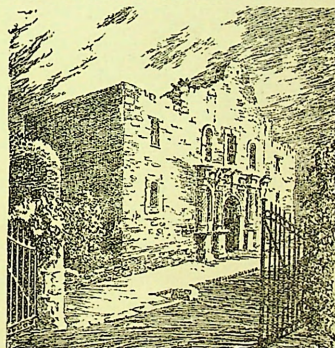


The paving program eastward is now so well advanced San Antonio will be connected by pavement with all points on the Atlantic seaboard from Maine to Florida by the end of 1931.

The secret of course is that never has this Old Spanish Trail project been a promoter's plaything. It was organized and has been directed by the people of the South.

Somehow it has seemed as though the spirit of the *padres* and the *conquistadores* flamed again in the soul of these Anglo-Saxon pioneers. We read the story of the Spaniards of those three centuries from St. Augustine to San Diego and marvel at their fortitude in the face of such hardships. We view the evidences of their works and marvel at their achievements. We who have watched these modern men from Florida to California rise to the demands of this southern



THE ALAMO, SAN ANTONIO

Mission San Antonio de Valero now known as the Alamo. Transferred from the Rio Grande in 1718 it is recognized as the beginning of San Antonio. The corner stone of this building was laid May 8, 1741. In 1762 a report stated the tower and sacristy had fallen and a quarried stone church of baroque architecture was being built.

It was occupied by the Texas patriots in defense of San Antonio and for the independence of Texas against Santa Anna and the Mexican army. The Alamo fell March 6, 1836. All the patriots were killed. The defense of the Alamo is one of the epic stories of the ages.

This a

SAMPLE of  
SIZE...STYLE...AND HANDLING OF ILLUSTRATIONS, etchings of  
antique appearance preferred.

NUMBER OF PAGES

Cover (front)	1
" (back)	3
List or Index	43
Cuts "	6
Blank pages	4
Etchings as above	57
	10
	67 pages

MEMO

built  
or known.

possible

artist  
press archives.