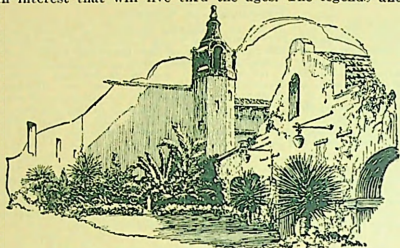


on the Atlantic slope were fighting England for freedom, Spain was peacefully building the missions along the Pacific slope. Earlier than this her missions at Tucson and Nogales, at Santa Fe, at El Paso and Ysleta, at San Antonio, St. Augustine and elsewhere, and her works all thru these Southern Borderlands, were crowning her name with an interest that will live thru the ages. The legends and



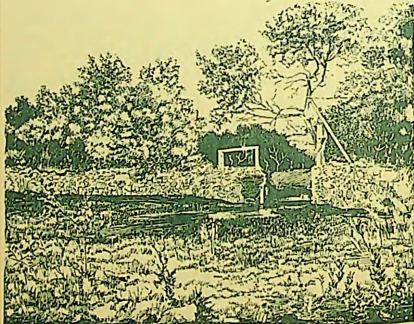
IN THE VALLEY OF THE PADRES  
SAN DIEGO, CALIFORNIA

Poets sing of the padres and their missions along this Golden Coast. San Diego has a monument to Father Junipero Serra who administered the mission building enterprises. Helen Jackson's "Romona" is a romantic story of the mission period and its fall. Here at San Diego also you may look down into the "Wishing Well" as you did at St. Augustine and let your spirit for the moment dwell with those of that bygone and romantic age.

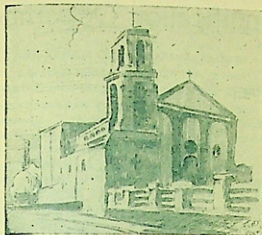
landmarks of a romantic past lie along the pathways and out among the byways of the Old Spanish Trail.

**Hotels.**—U. S. GRANT, largest and best. CHURCHILL, moderate and good. SAN DIEGO, popular and well liked. ADMIRAL, popular prices, good. PICKWICK, new, good; the Pickwick bus station headquarters. Also DEL CORONADO, MARYLAND and SOUTHERN.

Auto camps—twelve cabin camps. Inf.—Chamber of Commerce. Also Auto Club of Southern California branch.



DAM OF THE MISSION IRRIGATING SYSTEM, SAN DIEGO  
THE MOTHER MISSION OF CALIFORNIA,  
SAN DIEGO DE ALCALA.



Sketch by  
Floyd Cross

Mission Nuestra Señora de Guadalupe founded 1639 at El Paso del Norte, now Juarez. The Mother Mission of the El Paso group. Constructed without a nail or screw of any kind. The belfry tower is separate half way up from the auditorium.

(Reproduced by the Old Spanish Trail from the  
Texas Almanac of 1859)

TEXAS ADVERTISEMENTS

## OVERLAND TO THE PACIFIC



### The San Antonio and San Diego Mail-Line

THIS LINE which has been in successful operation since July, 1857, is ticketing PASSENGERS, through to San Diego, and also to all intermediate stations. Passengers and Express matter forwarded in NEW COACHES drawn by six mules over the entire length of our line, excepting the Colorado Desert, of 100 miles, which we cross on mule back. Passengers guaranteed in their tickets to ride in Coaches, excepting the 100 miles, above stated.

#### PASSENGERS TICKETED TO AND FROM SAN ANTONIO AND

Fort Clark,	Fort Bliss,	Tucson,
Fort Hudson,	El Paso,	Arizona,
Fort Lancaster,	Fort Fillmore,	Fort Yuma,
Fort Davis,	La Mesilla,	San Diego

The Coaches of our Line leave semi-monthly from each end, on the 2nd and 21st of each month, at 6 o'clock, A. M.

An armed escort travels through the Indian country with each mail train, for the protection of the mails and passengers.

Passengers are provided with provisions during the trip except where the Coach stops at Public Houses along the Line, at which each Passenger will pay for his own meal.

Each Passenger is allowed thirty pounds of personal baggage, exclusive of blankets and arms.

Passengers coming to San Antonio can take the line of mail steamers from New Orleans twice a week to Indianola, from the latter place there is a daily line of four horse mail coaches direct to this place.

On the Pacific side the California Steam Navigation Company are running a first class steamer, semi-monthly, to and from San Francisco and San Diego.

#### FARE ON THIS LINE AS FOLLOWS, INCLUDING RATIO'S

San Antonio to San Diego,	\$200	San Antonio to El Paso,	\$100
" " " " " " " "	"	" " " " " " " "	"
Extra baggage, when carried,	40 cents per pound to El Paso, and 41 per pound to San Diego.	Intermediate stations	10c per mile

Passengers can obtain all necessary outfits in San Antonio. For further information, and for the purchase of tickets, apply at the office of the Company in this city, or address L. C. WOODS, Superintendent of the line, care of American Coal Company, 50 Exchange Place, New York.

G. H. GIDDINGS  
R. E. DOYLE,  
Proprietors.