

Camino Real, Bexar County

River for the purpose of opening up trade relations, and who, after a cordial reception by the Spanish Governor was sent as a prisoner to Mexico City, but eventually was released, eloped with the daughter of the Spanish Governor, and returned to Louisiana where he governed with absolute sway for many years, taking a special delight in sending his traders into the forbidden territory of Texas. This roused the Spaniards to action, and the founding of the mission at San Augustine, and the establishment of the fort at Nacogdoches were made primarily for the purpose of stopping this French trade, but it didn't stop it, and from the letters which St. Dennis and the various Spanish Governors hurled at each other, we would infer that they were almost at

Governor, we are inclined to believe that this fierce epistolary combat was only a bluff.

#### General Route.

At the present time the old Camino Real in Texas follows State Highway No. 21 through Sabine, San Augustine, Nacogdoches, Cherokee, and Houston Counties. From the border of Houston County to Caldwell in Burleson County it is not a designated state highway. From Caldwell to Giddings in Lee County, it apparently follows State Highway No. 21. From Giddings in Lee County to Bastrop in Bastrop County, it is not a designated state highway. From Bastrop to about 15 miles west, it follows State Highway No. 3-A, and from that point to San Marcos it is not a designated state highway. From San Marcos to San Antonio it follows State Highway No. 2, and from San Antonio, south almost to McMullen County and thence west thru Frio, La Salle, Dimmitt and Maverick Counties to the Rio Grande River it does not follow a designated highway.



Camino Real, Guadalupe County

and Madison Counties and also between Robertson and Brazos Counties.

Father Morfi who visited the San Antonio Missions about 1778, reported near the Rio Grande "This is the place where the Apaches killed several men recently". Somewhat farther on he again mentioned "Here we counted 103 skeletons, supposed to be Apaches". The site of the old fort where the Parker family was massacred in Houston County is near this road. The battle fields of Salado and San Antonio border this road and it passes by the "Alamo" whose history is dear to the heart of every Texan. It is probable that if the old road could but speak, it would tell of hundreds of similar incidents which have taken place along its length in many long years during which it has served as a highway for man and beast.

Anyone studying the history of the road cannot fail to be impressed by the important part it played in the development of the country. Over it there have passed painted Indians and hopeless captives, bare footed friars, Spanish soldiers, sturdy American settlers, troops of the Republic of Mexico, of the Confederate Army and of the U. S. Government. Along its route Indian battles have been fought, people have been massacred and much blood has been shed, but we are glad to believe that also this old road has contributed much to human happiness, and in the homes along side of it there have been instilled not only the deep ties of friendship and of love, but also of the purest patriotism.

We must not fail to mention the Chevalier St. Dennis, that gallant young Frenchman who, with a mere handful of trappers and Indians, made the trip from Natchitoches, Louisiana to the Rio Grande

daggers drawn, but later when we hear of a gallant party of young Frenchmen, headed by St. Dennis' nephew, coming to Nacogdoches where this young Frenchman married the daughter of the Spanish

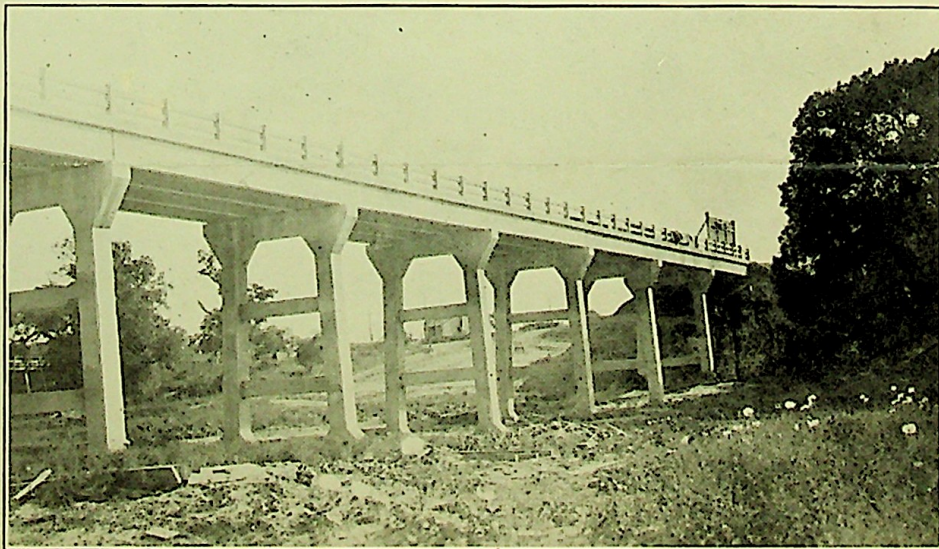
Sections of the old highway have been improved in San Augustine, Nacogdoches, Houston, Bastrop, Comal, Guadalupe and Bexar Counties.

It is worthy of note that this highway in its course crosses the following rivers; viz, Sabine, Attoyac, Angelina, Neches, Trinity, Navasota, Brazos, Colorado, San Marcos, Guadalupe, San Antonio, Atascosa, Frio and the Rio Grande.

#### Importance of the Road.

This road was very vital to Spanish Sovereignty because it served to connect eight missions scattered between the Rio Grande and the Sabine Rivers with the center of Spanish authority in Mexico, not to mention that it also served to

(Concluded on page 36)



Camino Real, Bastrop County