

AZTEC. Store, garage, meals, camp, \$1.25 and \$2.00.
MOHAWK. Two stores, two garages, lunch. Free camp space; also cabins. Water is hauled.

WELLTON. Sandy mesa. Irrigation from wells a future possibility. **WELLTON HOTEL;** restaurant all night. Camp and showers. Cabins and cottages \$1.00 and \$1.50.

***YUMA.** Jct. of Gila and Colorado rivers. Gateway to Southern California. Ancient Spanish river crossing in the conquest and development of the Southwest. Today Yuma is a busy, growing city. Yuma Indians and their wares add a picturesque touch. Irrigation from Laguna Dam on the Colorado River; the cultivated areas 12 mi. south of Yuma. Time changes; reset your watch.

HOTELS—The DEL MING leads. **HOTEL ARIZONA,** old—cool porch rms. **HOTEL LEE,** new, good values. Several cabin camps with numerous cabins. Inf.—Chamber of Commerce.

ARIZONA-CALIFORNIA STATE LINE

Colorado River

SOUTH CALIFORNIA—178 MILES

Road Conditions

Pavement and oiled gravel, with a short section of decomposed granite—all good driving. The Sand Hills, one of the real resorts and long a terror to drivers, now show pavement. The Mountain Springs grade with its steep climbs now concrete.

Description of Country

The Old Spanish Trail in California is close to the Mexican border for many miles. West from Yuma 7 mi. and 1½ mi. south on the border are the head gates of the Imperial Valley Irrigation; the water comes thru Mexico. Across the line is Algodones, Mexico, with seven saloon owners, now claimed costing \$17,000. South of Holtville and El Centro are the Mexican border towns of Calexico and Mexicali. In the Imperial Valley the traveler is 50 ft. below sea level in the bed of the old Salton Sea; shortly the mountains are crossed at 4,103 ft. elevation; thru the mountains are resorts and camps a-top the world; at San Diego and the sea are hills and valleys.

Old History

San Diego is the end of the Old Spanish Trail and the beginning of the last works of the Spanish in the U.S. In 1769 the San Diego mission was founded—204 yrs. after St. Augustine. During the American Revolution the Spanish were building that great chain of missions up the California coast.

FT. YUMA. A settlement at the Yuma Indian Reservation. Officials here search your car and baggage to prevent entry of plant or fruit diseases. Cabin camp, 25c to \$1.25.

GRAY'S WELL. West from Yuma 21 mi. in the sand hill section. Good water from a deep well, phone, store. All night lunch, gas and other service at Peg's Place. Peg Hunt is said to know the highway situation in the southwest and he appreciates travelers stopping for any service.

HOLTVILLE. One of the Imperial Valley centers. **ALAMO HOTEL,** fair. Two cabin camps, good. A road south to Mexicali, Mexico. Inf.—Chamber of Commerce.

***EL CENTRO.** Commercial center of the Imperial Valley, one of the great irrigation districts of the world. A busy, prosperous city. **HOTEL BARBARA WORTH** leads, a fine hotel. **OREGON HOTEL,** remodeled, refurbished. City camp, 25c. Calexico and Mexicali, border towns, south. Inf.—Chamber of Commerce. Also Auto Club of Southern California branch.

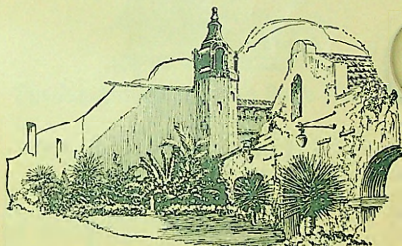
MOUNTAIN SPRINGS. 35 mi. west. Store, garage, water. Established by Government in 1846. Devil's Canyon near. Splendid scenery thru these mountains. 7% grade, concrete pavement.

JACUMBA HOT SPRINGS. 14 mi. west Mountain resort for Imperial Valley people. Elevation 2,800 ft. Hot sulphur baths. Cold spring. Concrete pool, dance hall, etc. **HOTEL VAUGHN,** 65 rms., new, fine. Cabin camp, 25c to 75c. Inf.—Bert L. Vaughn. Also old Jacumba (Jacumba) with modern hotel. Mistletoe Lodge 1 mi. west and cottages.

BOULEVARD. Store and supplies. Summer resort. Camp.

West to San Diego 70.5 mi. are settlements, mountain, valley and spring camping places, cabin auto camps, furnished cabins, small hotels, meals, etc. The mountain summit is passed at 4,103 ft. In Arizona, New Mexico and Texas higher elevations are reached. These are listed under Bisbee, Ariz., summit.

***SAN DIEGO.** This is the Pacific Terminus of the Old Spanish Trail. It was the beginning of the Spanish occupation of California. The first mission, San Diego de Alcala, was started in 1769, then followed those other sanctuaries "a day's journey apart" northward on and beyond San Francisco, twenty-one in all. While the patriots on the Atlantic slope were fighting England for freedom, Spain was peacefully building the missions along the Pacific slope. Earlier than this her missions at Tucson and Nogales, at Santa Fe, at El Paso and Ysleta, at San Antonio, St. Augustine and elsewhere, and her works all thru these Southern Borderlands, were crowning her name with an interest that will live thru the ages. The legends



IN THE VALLEY OF THE PADRES
SAN DIEGO, CALIFORNIA

Poets sing of the padres and their missions along this Golden Coast. San Diego has a monument to Father Junipero Serra who administered the mission building enterprises. Helen Jackson's "Ramona" is a romantic story of the mission period and its fall. Here at San Diego also you may look down into the "Wishing Well" as you did at St. Augustine and let your spirit for the moment dwell with those of that bygone and romantic age.

and landmarks of a romantic past lie along the pathways and out among the byways of the Old Spanish Trail.

HOTELS—U. S. GRANT, a leading hotel. **EL CORTEZ,** new, distinguished in type and character. **CHURCHILL,** moderate and good. **SAN DIEGO,** popular and well liked. **PICKWICK,** new, good; the Pickwick bus station headquarters. **DEL CORONADO** is located on the beach. San Diego has many and varied hotels.

CAMPS—Twelve cabin camps. Inf.—Chamber of Commerce. Also Auto Club of Southern California branch.