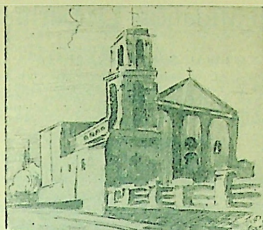


124



Sketch by  
Floyd Cross

Mission Nuestra Señora de Guadalupe founded 1659 at El Paso del Norte, now Juarez. The Mother Mission of the El Paso group. Constructed without a nail or screw of any kind. The belfry tower is separate half way up from the auditorium.

(Reproduced by the Old Spanish Trail from the Texas Almanac of 1859)

TEXAS ADVERTISEMENTS

OVERLAND TO THE PACIFIC



The San Antonio and San Diego Mail-Line

THIS LINE which has been in successful operation since July, 1857, is ticketing PASSENGERS, through to San Diego, and also to all intermediate stations. Passengers and Express matter forwarded. NEW COACHES drawn by six mules over the entire length of our Line, excepting the Colorado Desert, of 100 miles, which we cross on mule back. Passengers guaranteed in their tickets to ride in Coaches, excepting the 100 miles, above stated.

PASSENGERS TICKETED TO AND FROM SAN ANTONIO AND

- |                 |                |            |
|-----------------|----------------|------------|
| Fort Clark,     | Fort Bliss,    | Tucson,    |
| Fort Hudson,    | El Paso,       | Arizona,   |
| Fort Lancaster, | Fort Fillmore, | Fort Yuma, |
| Fort Davis,     | La Mesilla,    | San Diego  |

The Coaches of our Line leave semi-monthly from each end, on the 9th and 21st of each month, at 6 o'clock, A. M.

An armed escort travels through the Indian country with each mail train, for the protection of the mails and passengers.

Passengers are provided with provisions during the trip except where the Coach stops at Public Houses along the Line, at which each Passenger will pay for his own meal.

Each Passenger is allowed thirty pounds of personal baggage, exclusive of blankets and arms.

Passengers coming to San Antonio can take the line of mail steamers from New Orleans twice a week to Indianola, from the latter place there is a daily line of four horse mail coaches direct to this place.

On the Pacific side the California Steam Navigation Company are running a first class steamer, semi-monthly, to and from San Francisco and San Diego.

FARE ON THIS LINE AS FOLLOWS, INCLUDING RATIO'S

San Antonio to San Diego, \$200	San Antonio to El Paso, \$100
" " Tucson, 150	Intermediate stations 10c per mile

Extra baggage, when carried, 40 cents per pound to El Paso, and 45 per pound to San Diego.

Passengers can obtain all necessary outfits in San Antonio. For further information, and for the purchase of tickets, apply at the office of the Company in this city, or address I. C. WOODS, Superintendent of the line, care of American Coal Company, 50 Exchange Place, New York.

G. H. GIDDINGS  
R. E. DOYLE,  
Proprietors.



DAM OF THE MISSION IRRIGATION SYSTEM, SAN DIEGO,  
THE MOTHER MISSION OF CALIFORNIA,  
SAN DIEGO DE ALCALA.